



# **UNDER CABINET RANGE HOOD**

**MANUAL**

# IMPORTANT SAFETY INSTRUCTIONS

## READ AND SAVE THESE INSTRUCTIONS



## FOR DOMESTIC COOKING ONLY



1. Read all instructions before using the appliance
2. Install or locate this appliance only in accordance with the provided installation instructions.
3. Clean Rangehoods Hoods Frequently. Grease should not be allowed to accumulate on the rangehood or filters.
4. Always turn the fan on when flambéing foods on the range.
5. This appliance is suitable for use in combination with both gas and electric cooking equipment
6. Use care when cleaning the rangehood filter. Corrosive cleaning agents, such as lye-based oven cleaners, may damage the filter.

## GROUNDING INSTRUCTIONS

- 1) If it is necessary to use an extension cord, use only a 3-wire extension cord that has a 3-blade electrical plug, and a 3-slot power outlet that will accept the plug on the appliance. The marked rating of the extension cord must be equal to or greater than the electrical rating of the appliance. Otherwise,
- 2) Do not use an extension cord. If the power supply cord is too short, have a qualified electrician or serviceperson install a power outlet near the appliance.

## WARNING



TO REDUCE THE RISK OF FIRE, ELECTRIC SHOCK, OR INJURY TO PERSONS, OBSERVE THE FOLLOWING:

1. Use this unit only in the manner intended by the manufacturer. If you have questions, contact the manufacturer at the address or telephone number listed in the warranty.
2. Before servicing or cleaning the unit, switch the power off at the service panel. Lock and tag the service panel to prevent power from being switched on accidentally.
3. Installation work and electrical wiring (including switch location) must be done by a qualified person(s) in accordance with all applicable codes and standards.
4. To prevent backdrafting, provide sufficient air for proper combustion and exhausting of gases through the flue (vent) of the fuel burning equipment. Follow combustion equipment standards such as those published by the National Fire Protection Association (NFPA,) the American Society for Heating, Refrigeration and Air Conditioning Engineers (ASHRAE,) and local codes.
5. This product may have sharp edges. Be careful to avoid cuts and abrasions during installation and cleaning.
6. When cutting or drilling into a wall or ceiling, do not damage electrical wiring and other hidden utilities.
7. Ducted fans must always be vented to the outdoors.
8. Use only metal ductwork.
9. As an alternative, this product may be installed following instructions from the designated UL-approved cord kit
10. This unit must be grounded.

TO REDUCE THE RISK OF A RANGE TOP GREASE FIRE:

1. Never leave surface units unattended. Rapid boiling causes smoke and grease spills that may ignite. Heat oils slowly on a low or medium setting.
2. Always turn hood ON when cooking at high heat or when flambéing food.
3. Clean the ventilating fans frequently. Do not allow grease to accumulate on the fan, fan blades and filter.
4. Use the proper pan size. Always use cookware appropriate for the size of the surface element.

## WARNING



TO REDUCE THE RISK OF INJURY TO PERSONS IN THE EVENT OF A RANGE TOP GREASE FIRE, OBSERVE THE FOLLOWING:\*

1. SMOTHER FLAMES with a close-fitting lid, cookie sheet, or metal tray, then turn off the burner. BE CAREFUL TO AVOID BURNS. If the flames do not go out immediately, EVACUATE THE AREA AND CALL THE FIRE DEPARTMENT.
2. NEVER PICK UP A FLAMING PAN. You may get burned or spread the fire.
3. DO NOT USE WATER, including wet dishclothes or towels; a violent steam explosion could result.
4. Use an extinguisher ONLY if:
  - A. You know you have a Class ABC extinguisher and you already know how to operate it.
  - B. The fire is small and contained in the area where it started.
  - C. The fire department has already been called.
  - D. You can fight the fire with your back to an exit.

\*Based on "Kitchen Fire Safety Tips" published by NFPA.

## CAUTION



1. For indoor use only.
2. For general ventilating use only. Do not use to exhaust hazardous or explosive materials and vapors.
3. To best capture cooking impurities, the range hood should be mounted so that the bottom of the hood is 26"-34" above the cooking surface.
4. Read the specification label on this product for information and requirements.

**NOTE:** These instructions are for ducted installations only.

**Installer: Leave this manual with the homeowner.**

**Homeowner: Cleaning, maintenance, and operating instructions begin on page 3.**

# DUCTING

Determine whether the hood will discharge vertically or horizontally. For vertical or horizontal discharge, run ductwork between the hood location and roof cap or wall cap.

A minimum 6" round duct must be used to maintain maximum airflow efficiency.

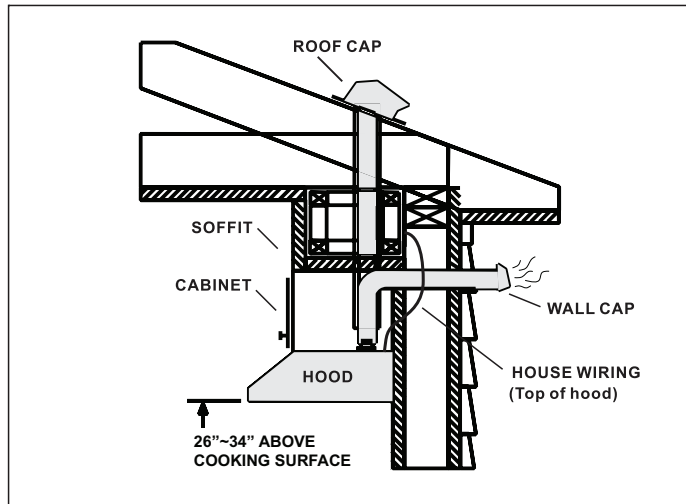
Always use rigid type metal ducts only.

Whenever possible reduce the number of transitions and turns in the ductwork. If a long duct run is required increase the duct size from 6" to 7".

If elbows or bends are required; install as far away from the hood as possible.

Minimum mounting height between the range and the bottom of the hood should be no less than 26".

Maximum mounting height between the range and the bottom of the hood should be no more than 34"

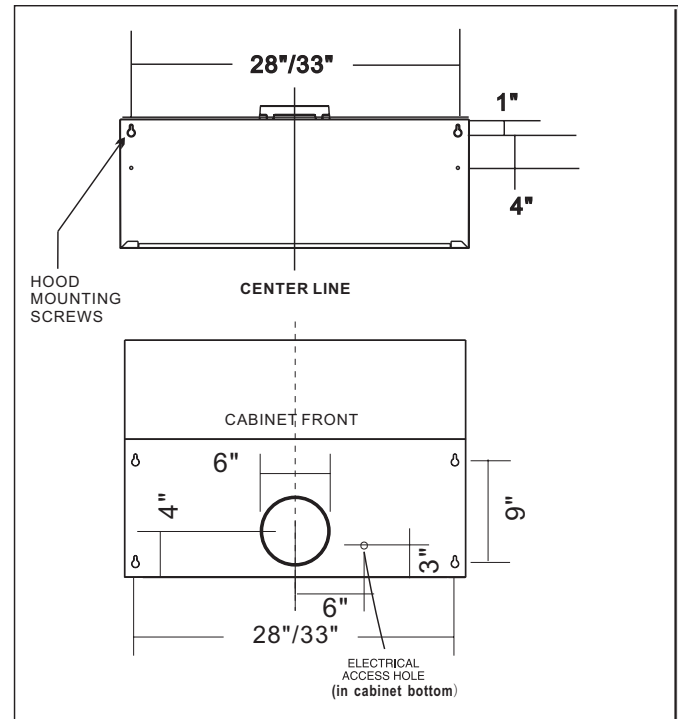


## WARNING! FIRE HAZARD



NEVER implement ductwork in a space between walls, crawl spaces, attics or garages. All exhaust must be vented outside. Use metal ductwork only. Fasten all connections with sheet metal screws and certified silver tape or duct tape.

2. Use the following diagram for placement of ductwork and electrical cutout in cabinet. For a non-ducted installation, DO NOT cut a duct access hole.



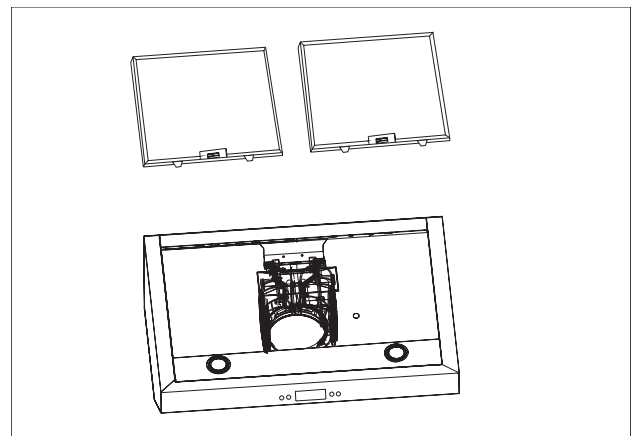
# INSTALLATION

## WARNING

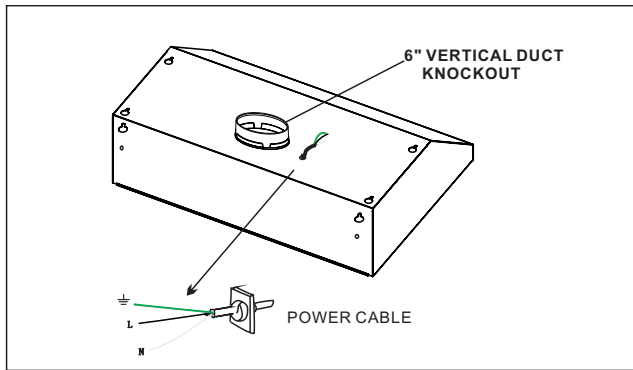


To reduce the risk of electrical shock, switch the power off at the service panel. Lock or tag the service panel to prevent power from being switched on accidentally.

The hood is designed for installation under a kitchen cabinet:



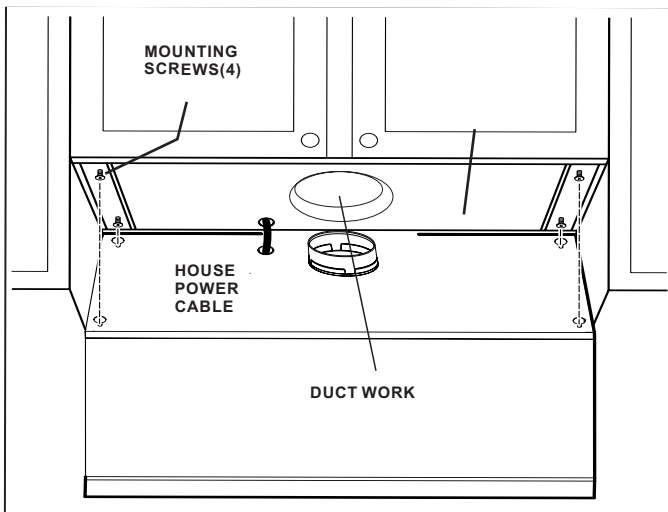
1. Remove the mesh filters from the unit
2. Reinforce cabinet with 1" x 2" wood strips if additional support is required.



#### Heat Sensor (available with Model"UMC30"only):

The hood is equipped with a heat sensing thermostat. If the safety device detects heat in excess of 158°F (70°C) above the cooking surface, it will turn on or speed up the fan. If the fan is not on or running at a low speed, the heat sensor will override the normal fan control and run the fan on high speed. When the temperature level drops below 158°F (70°C) the fan speed will revert back to its original setting.

3. Temporarily position the rangehood in its intended place. Using a pencil measure, mark the mounting holes, duct and electrical locations.
4. Drill/cut out the required openings for duct and electrical access; ensure the damper/duct connector enter the ductwork and the damper opens and closes freely
5. Connect the electrical supply wiring (make sure power supply is off)
6. Leave enough space to apply duct tape to the connection



7. Securely fasten the hood to the **cabinet** with the mounting screws
8. Securely fasten the hood to the **wall** with the mounting screws
9. Install the filters

## OPERATION(ELECTRONIC)

Always turn the hood ON before cooking in order to establish an air flow in the kitchen. After turning off the range, let the hood run for a few minutes to clear the air.



 Power

To activate the rangehood, press the power button. Once activated, the buttons and LED light up.

 Light

The Silhouette Select™ rangehood are equipped with 3 light settings High, Low and Off. Press the light icon once and the 20w halogen bulbs turn on providing full task lighting. Press the icon again and this reduces the illumination to 50%. Press the icon a third time to turn the lights off.

 Filter


After 100 hours, the filter icon lights up and the user must remove the filter, clean it and replace it in order to reset the icon. Press and hold the power button for 3 seconds to reset after cleaning the filter.

 Timer


Silhouette Select™ rangehoods include a convenient feature that allows the range hood to continue to run for an additional 5 minutes to expel residual vapors and odours after cooking. When the timer button is pressed once the current fan speed will continue to run for a duration of 5 minutes and the timer icon appears on the LED display. Push the timer button a second time to cancel the timer and remove the icon from the LED display.

 Fan

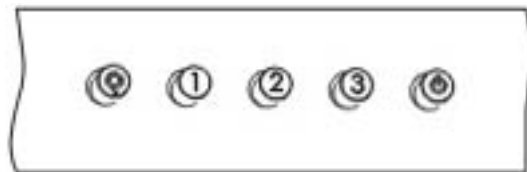
Your Silhouette Select™ rangehood offers 3 fans settings low, medium and high. To activate the fan press the fan button and the fan starts at the low setting and the corresponding icon appears on the LED display. Press the fan button again and the blower increases to the medium speed. Press a third time for the highest speed and a fourth time to turn the fan off.

 Icon for low speed

 Icon for medium speed

 Icon for high speed

## OPERATION(PUSH BUTTON)



 Power

Push "Power" button, the motor will stop running at any speed.

 Light

Push "Light" button, the LED lights will be on / off.

**1**

Push "1" button, the motor will run at low speed.

**2**

Push "2" button, the motor will run at middle speed.

**3**

Push "3" button, the motor will run at high speed.

## CLEANING & MAINTENANCE

The mesh filters are intended to trap residue and grease from the cooking process. To ensure optimal performance, appearance, and a sanitary cooking environment, clean the filters, fan and grease laden surfaces regularly. Use only a clean cloth and mild detergent solution on stainless steel and painted surfaces. Do not use corrosive or abrasive cleaning agents or steel wool or scouring pads as these will scratch the surface. Do not use cleaning products that use chlorine bleach or orange cleaners.

The grease filters, bottom panel surrounding the grease filters, and the blower should be cleaned frequently. When washing by hand use warm soapy (mild detergent) water. The grease filter and blower wheels are dishwasher safe.

1. Remove the grease filters.
2. Reach within the unit and push out the lamp housing towards you. See Fig. 1 on previous page.
3. Using a small, flat-head screw driver pop off the glass plate. See Fig. 2 above.
4. Remove the burnt out 2-pronged 20 watt Halogen bulb. Replace with a new 20 watt Halogen bulb. Wipe the new bulb with a clean cloth before replacing the cover.
5. Caution: the lights are designed for 20 watt Halogen bulbs only. Replacing with high wattage bulbs can result in damage to the rangehood or fire and not recommended
6. Replace lamp cover and press lamp housing back into place.

## REPLACING LIGHT BULBS

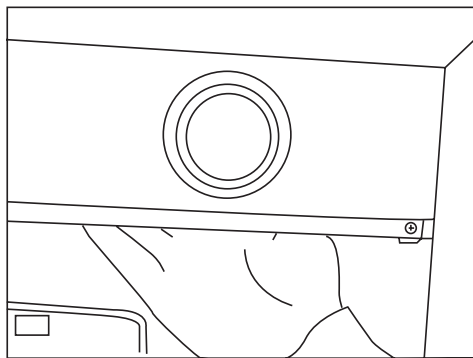


Fig.1

**CAUTION:** the light bulbs and glass cover become extremely hot when running. Shut off the lights and allow them to cool prior to changing the bulb. Failing to do so could result in serious burns. Turn off power to the unit before replacing bulb. Be careful around sharp edges.

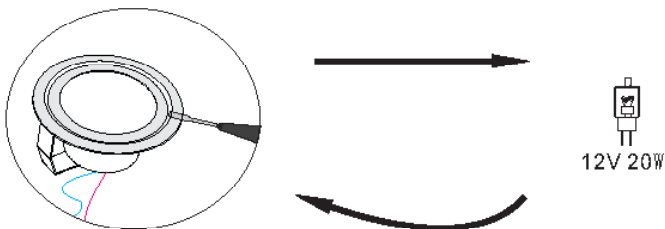


Fig. 2

# TROUBLESHOOTING

Issue	Cause	What to do
After installation, the unit doesn't work.	<ol style="list-style-type: none"> <li>1. The power source is not turned ON.</li> <li>2. The power line and the cable locking connector is not connecting properly.</li> </ol>	<ol style="list-style-type: none"> <li>1. Call for service.</li> <li>2. Call for service.</li> </ol>
Light works, but motor is not turning.	<ol style="list-style-type: none"> <li>1. The blower is defective, possibly seized.</li> <li>2. Damaged capacitor.</li> </ol>	<ol style="list-style-type: none"> <li>1. Call for service.</li> <li>2. Call for service.</li> </ol>
The unit is vibrating.	<ol style="list-style-type: none"> <li>1. The blower is not secure in place.</li> <li>2. Damaged blower wheel.</li> <li>3. The hood is not secured in place.</li> </ol>	<ol style="list-style-type: none"> <li>1. Tighten the blower in place.</li> <li>2. Change the blower.</li> <li>3. Check the installation of the hood.</li> </ol>
The motor is working, but the lights are not.	<ol style="list-style-type: none"> <li>1. Defective halogen bulb / LED lights.</li> </ol>	<ol style="list-style-type: none"> <li>1. Change the halogen bulb / LED lights.</li> </ol>
The hood is not venting out properly.	<ol style="list-style-type: none"> <li>1. The hood might be hanging too high from the cook top.</li> <li>2. The wind from the opened windows or opened doors in the surrounding area are affecting the ventilation of the hood.</li> <li>3. Blockage in the duct opening or duct work.</li> <li>4. The direction of duct opening is against the wind.</li> <li>5. Using the wrong size of ducting.</li> </ol>	<ol style="list-style-type: none"> <li>1. Adjust the distance between the range and the bottom of the hood to within 26"~34".</li> <li>2. Close all windows and doors to eliminate the outside wind flow.</li> <li>3. Remove all the blocking from the duct work or duct opening.</li> <li>4. Adjust the duct opening direction.</li> <li>5. Change the ducting to at least 6" or higher.</li> </ol>
Metal filter is vibrating.	<ol style="list-style-type: none"> <li>1. Spring clip is broken.</li> <li>2. Metal filter is loose.</li> </ol>	<ol style="list-style-type: none"> <li>1. Verify spring clip is not broken.</li> <li>2. Replace the metal filter.</li> </ol>